



AWDURDOD  
CYMHWYSTERAU,  
CWRICWYLWM AC ASESU  
CYMRU  
QUALIFICATIONS,  
CURRICULUM &  
ASSESSMENT AUTHORITY  
FOR WALES



# Key skills application of number

## Adult numeracy

### Level 1

## Test Paper

#### YOU NEED

- This test paper
- An answer sheet
- A ruler marked in mm and cm

You may NOT use a calculator

You may use a bilingual dictionary

You may write on this paper if it helps you to work things out

---

Do NOT open this paper until you are told to do so by the supervisor

THERE ARE 40 QUESTIONS IN THIS TEST

Total marks available: 40

Try to answer ALL the questions

YOU HAVE 1 HOUR 15 MINUTES TO FINISH THE TEST

---

#### INSTRUCTIONS

- Make sure your personal details are entered correctly on the answer sheet
- Read each question carefully
- Follow the instructions on how to complete the answer sheet
- At the end of the test, hand the test paper, your answer sheet and all notes to the supervisor

---

**REMEMBER: YOU HAVE 1 HOUR 15 MINUTES TO FINISH THE TEST**

---

#### INSTRUCTIONS TO CENTRES

- This paper must not be photocopied

First published in 2005.

© Qualifications and Curriculum Authority 2005.

Reproduction, storage, adaptation or translation, in any form or by any means, of this publication is prohibited without prior written permission of the publisher, unless within the terms of licences issued by the Copyright Licensing Agency.

Printed in Great Britain.

The Qualifications and Curriculum Authority is an exempt charity under Schedule 2 of the Charities Act 1993.

Qualifications and Curriculum Authority, 83 Piccadilly, London W1J 8QA. [www.qca.org.uk](http://www.qca.org.uk)

Ref: AoN-L1-S1\_B-P5-v7.0-URN:351

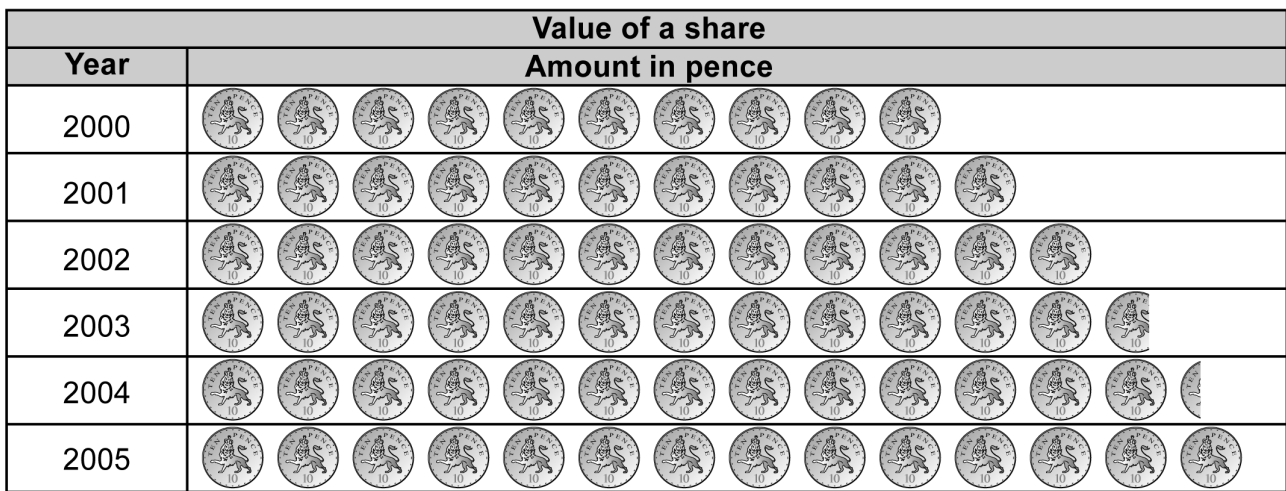
Questions 1 and 6 are about a large company


1 The company employs 52 862 people.

What is 52 862 to the nearest hundred?

- A 52 800
- B 52 860
- C 52 900
- D 53 000

2 This chart shows the value of one share in the company over 6 years.



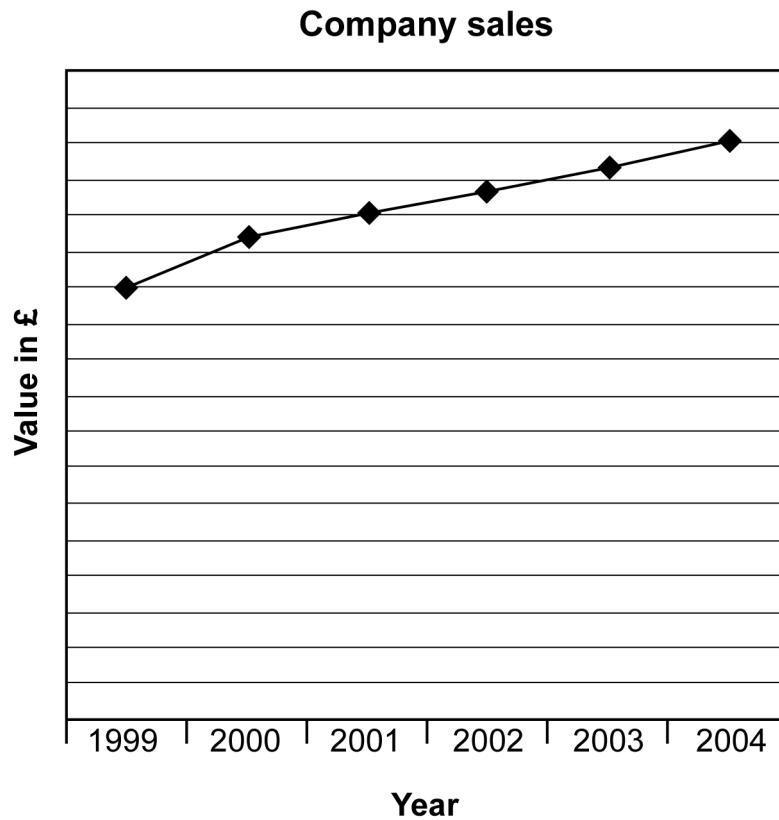
 = 10p

How much **more** was the share worth in 2005 than in 2000?

- A 10 pence
- B 40 pence
- C 100 pence
- D 140 pence

3

The graph below shows the value of company sales over the last 6 years.



What is missing?

- A a title
- B a scale on the vertical axis
- C a label on the horizontal axis
- D a label on the vertical axis

4

The scale of a map is 1cm to 5km.  
The distance on the map from the company headquarters to a site in Derby is 2.5cm.

The actual distance is

- A 2.5km
- B 5.0km
- C 7.5km
- D 12.5km

**5**

A manager at the Derby site has a salary of £24 830

In words this is

- A** twenty-four thousand and eighty-three pounds
- B** twenty-four thousand eight hundred and three pounds
- C** twenty-four thousand eight hundred and thirty pounds
- D** two hundred and forty-eight thousand and thirty pounds

**6**

The manager's assistant earns £6.84 an hour.

How much does he earn for a 40-hour week?

- A** £240.84
- B** £242.60
- C** £273.60
- D** £280.44

**Please go on to the next page**

**Please go on to the next page**

Questions 7 to 11 are about car maintenance.

7

Tyre pressure is measured in pounds per square inch (psi).  
This table shows the correct tyre pressure for different cars.

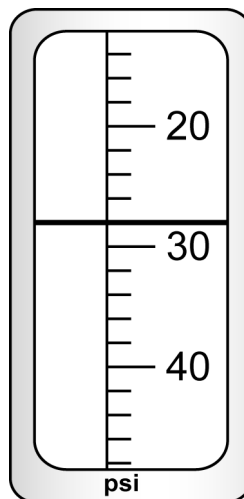
Car type	Tyre pressure (psi)	
	Front wheel	Rear wheel
Ford Fiesta	35	27
Vauxhall Corsa	28	25
Volkswagen Polo	30	30
Ford Escort	32	26
Citroen ZX	32	30
Vauxhall Vectra	29	29
Ford Mondeo	30	30

What is the correct **rear** wheel tyre pressure for a Vauxhall Corsa?

- A 25psi
- B 28psi
- C 29psi
- D 30psi

8

A driver checks her car tyre pressure.  
The line on the gauge shows the tyre pressure (psi).



The reading on the gauge is

- A 28psi
- B 29psi
- C 29.8psi
- D 29.9psi

9

The car needs two new tyres.  
The cost without fitting is £69.98  
The cost with fitting is £87.96

How much does the fitting cost?

- A £22.02
- B £18.98
- C £18.02
- D £17.98

10

The driver buys 26 litres of petrol costing 83.9p a litre.

Which calculation gives the **best** estimate of the total cost?

- A  $20 \times 80$
- B  $20 \times 90$
- C  $30 \times 80$
- D  $30 \times 90$

11

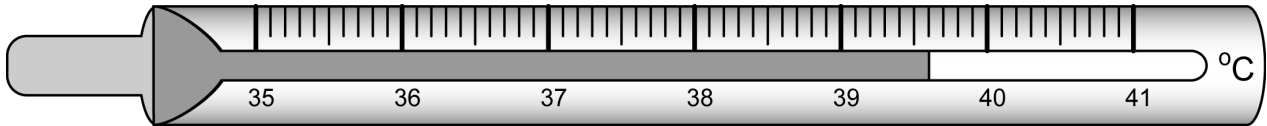
Anti-freeze costs £6.60 for a 2-litre bottle.  
The driver has a voucher giving a 20% discount.

How much is the discount?

- A £0.33
- B £0.66
- C £1.32
- D £2.00

Questions 12 to 17 are about caring for someone who is ill.

- 12** The carer takes the ill person's temperature with a thermometer. The diagram shows the temperature reading.



The thermometer reads

- A 39.5 °C
  - B 39.6 °C
  - C 39.8 °C
  - D 40.4 °C
- 13** A unit for measuring temperature is °C.  
The 'C' stands for
- A centigrade
  - B centimetres
  - C centilitres
  - D calories

Questions 14 and 15 use the following information.

The carer buys some cough medicine.  
The shop sells six brands.

Medicine prices					
£3.50	£3.20	£3.95	£3.95	£4.60	£4.80

**14** What is the range of the prices?

- A £1.30
- B £1.60
- C £3.20
- D £3.95

**15** What is the average (mean) price of these bottles of medicine?

- A £3.20
- B £3.95
- C £4.00
- D £4.80

**16** The carer buys a bottle of medicine costing £3.95 and pays with a £10 note.

His change is

- A £6.05
- B £6.15
- C £7.05
- D £7.95

**17**

The bottle holds 200 millilitres of medicine.  
The instructions are

**Take two 5ml spoonfuls  
4 times a day**

How many days will the bottle of medicine last?

- A** 5
- B** 10
- C** 20
- D** 40

**Please go on to the next page**

**Please go on to the next page**

Questions 18 to 21 are about a shopping trip to the sales.

**18** A shopper arrives at the train station at 8:35am to go to a nearby town. She waits until the train arrives late at 9:20am.

How long does she wait for the train?

- A 15 minutes
- B 45 minutes
- C 75 minutes
- D 85 minutes

**19** She sees a CD player in a shop window.

**CD player**  
**Save  $\frac{1}{4}$  off**  
**original price**

$\frac{1}{4}$  of £65.00 is

- A £16.25
- B £17.50
- C £25.00
- D £26.00

20 She goes to a health food shop.

**Special Offer**  
Buy 3 items for the price of 2  
The cheapest item is free

She buys three items:

Cod liver oil	£5.99
Calcium	£4.49
Vitamin C	£3.59

How much do these items cost at the special offer price?

- A £8.08
- B £9.48
- C £10.48
- D £14.07

21 A shoe shop has 30% off all boots.

What is 30% as a fraction?

- A  $\frac{1}{3}$
- B  $\frac{3}{10}$
- C  $\frac{1}{30}$
- D  $\frac{3}{100}$

Questions 22 to 27 are about a firm of electricians.

**22** The firm charges a £35 call out fee and £17.50 per hour for labour. An electrician works out the total charge for a job that takes four hours as £105.00

Which calculation checks the total charge for call out and labour?

- A  $4 \times (35 + 17.50)$
- B  $4 \times 17.50 - 35$
- C  $4 \times 35 + 17.50$
- D  $4 \times 17.50 + 35$

**23** He works out the VAT cost in pounds of one job as



What is the VAT cost rounded to two decimal places?

- A £16.00
- B £16.50
- C £16.54
- D £16.60

**24** A scale plan shows the length of wire required for a job as 54mm.

The scale of the plan is 1 to 100

The length of the actual wire required is

- A 54mm
- B 540mm
- C 5 400mm
- D 54 000mm

- 25** The table below shows the time one electrician spends estimating the costs of five jobs.

Time spent estimating costs (minutes)				
35	50	25	55	35

The average (mean) time he spends estimating costs is

- A 25 minutes
  - B 30 minutes
  - C 35 minutes
  - D 40 minutes
- 26** The firm expects to get a contract for one out of every four jobs where they estimate the cost.

How many contracts do they expect to get from 60 estimates?

- A 12
- B 15
- C 20
- D 24

**Please go on to the next page**

27 An assistant keeps a record of items used for jobs.

The table shows the number of light switches used during one week.

Day	single switches	double switches	dimmer switches
Monday	###	###	
Tuesday	###	###	
Wednesday		### ###	
Thursday	###	### ###	
Friday		###	
Saturday	### ###	### ###	###

How many **double switches** were used in total that week?

- A 18
- B 35
- C 46
- D 55

Please go on to the next page

**Please go on to the next page**

Questions 28 to 33 are about a hair salon.

**28** The salon employs five full-time staff.  
They each earn £240 a week.

Which calculation works out their total wages in a year?

- A  $5 \times 52 \times 240$
- B  $5 \times 240 + 52$
- C  $5 + 52 \times 240$
- D  $5 + 240 \times 52$

**29** One part-time stylist has a 0.6 contract.

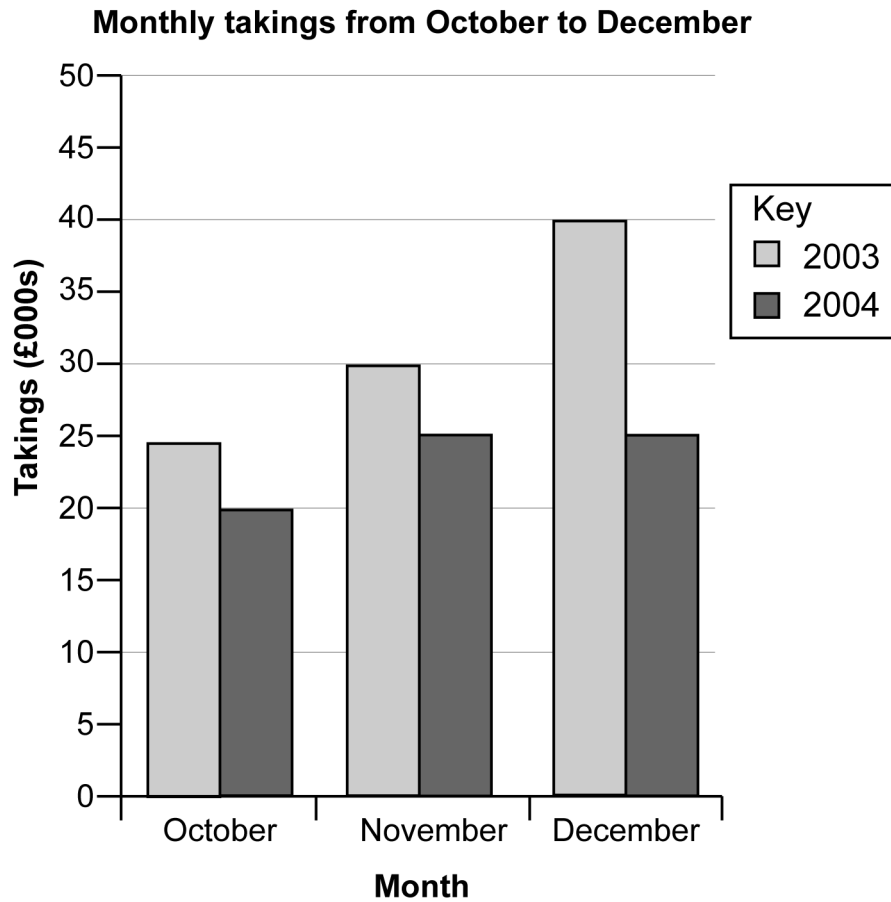
0.6 can also be written as

- A  $\frac{6}{100}$
- B  $\frac{1}{6}$
- C  $\frac{6}{10}$
- D  $\frac{6}{1}$

**Please go on to the next page**

30

This bar chart shows monthly takings from October to December of 2003 and 2004.



How much **more** were the takings in December 2003 than December 2004?

- A £20 000
- B £15 000
- C £10 000
- D £5 000

31

The takings in January are £25 733

To the nearest thousand pounds this is

- A £20 000
- B £25 000
- C £26 000
- D £30 000

**32** Last year's total takings were four hundred and sixty thousand pounds.

In figures this is

- A 46 000
- B 460 000
- C 4 060 000
- D 4 600 000

**33** The salon manager wants to show the **proportion** of takings from different services.

Which display **best** shows the proportion of takings from different services?

- A table
- B pictogram
- C line graph
- D pie chart

**Please go on to the next page**

**Please go on to the next page**

Questions 34 to 40 are about a woman working on her house.

**34** The woman works out the area of a wall she needs to paint.  
The wall is 4 metres long and 2.4 metres high.

The area of the wall is

- A 6.4m<sup>2</sup>
- B 9.6m<sup>2</sup>
- C 10.4m<sup>2</sup>
- D 12.8m<sup>2</sup>

**35** A full can of paint holds 750 millilitres.  
There is a part-used can of paint.

The can is  $\frac{1}{3}$  full.

How much paint is in the can?

- A 500ml
- B 333ml
- C 250ml
- D 130ml

**36** There are some holes in the wall.  
The woman fills the holes with filler mixed with water in the ratio

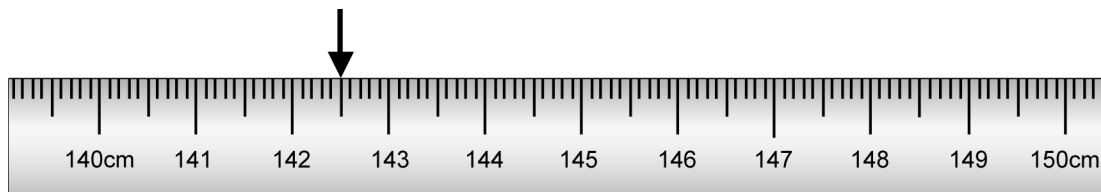
**5 parts filler : 2 parts water**

She uses 20 spoonfuls of filler.

How much water should she use?

- A 4 spoonfuls
- B 8 spoonfuls
- C 40 spoonfuls
- D 50 spoonfuls

- 37** She measures the width of a window with her tape measure.  
The diagram shows the reading on the tape.



What is the width of the window?

- A 142.05cm
- B 142.5cm
- C 143.05cm
- D 143.5cm

- 38** The woman needs 6 lengths of fabric each 1.75 metres long to make some curtains.

The fabric costs £5.99 a metre.

Which calculation gives the total cost of fabric?

- A  $6 \times 1.75 \div 5.99$
- B  $1.75 \div 6 \times 5.99$
- C  $6 \div 1.75 \times 5.99$
- D  $6 \times 1.75 \times 5.99$

- 39** A new curtain rail and hooks cost £22.80  
She has a 5% discount voucher.

What is 5% of £22.80?

- A £1.14
- B £2.28
- C £4.56
- D £5.00

40

She fits an extractor fan in the kitchen.

The output of the fan depends on the volume of the kitchen.

The kitchen is 2.4 metres high, 5 metres long and 4 metres wide.

The volume of the kitchen is

A 11.4m<sup>3</sup>

B 16.0m<sup>3</sup>

C 22.4m<sup>3</sup>

D 48.0m<sup>3</sup>

**End of test**

**BLANK PAGE**

**BLANK PAGE**